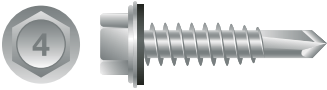


Submittal: SD4SWH1440BS



STRONG-POINT[®] 410 STAINLESS STEEL UNSLOTTED INDENTED HEX WASHER HEAD, PASSIVATED & WAXED W/BONDED NEO-EPDM WASHER

Size	Part#	Pt.	Case Qty.	Description
14-14 x 2-1/2	4HA1440	3	.8M	Unslotted Indented Hex Washer Head, Passivated & Waxed w/Bonded NEO-EPDM Washer
14-14 x 3	4HA1448	3	.5M	Unslotted Indented Hex Washer Head, Passivated & Waxed w/Bonded NEO-EPDM Washer
14-14 x 4	4HA1464	3	.5M	Unslotted Indented Hex Washer Head, Passivated & Waxed w/Bonded NEO-EPDM Washer
14-14 x 5	4HA1480	3	.25M	Unslotted Indented Hex Washer Head, Passivated & Waxed w/Bonded NEO-EPDM Washer

Application: Attaches metal to metal.
Drill Capacity (in.): .060 - .220

- Specifications:
- Manufactured to SAE¹ J78 for dimensional specifications
 - Meets F.I.P.²-1000.7 for torsional strength and drill speed
 - Medium degree of corrosion resistance

Installation: A 3/8" hex nut setter or 3/8" drive socket with torque limiting nose piece set at a maximum of 1750 RPM drive speed recommended. Do not over torque as it can cause the head to snap or stripping of the threads. Installed fasteners must penetrate a minimum of three full threads beyond the metal structure.

Pullout Values (Avg. Lbs.)										
Fastener		Steel Gauge								
Size	Pt.	22	20	18	16	14	12	1/8	3/16	1/4
14-14	3	287	339	595	856	1114	1805	2337	4416	4885

Shear Values (Avg. Lbs.)										
Fastener		Steel Gauge (Lapped)								
Size	Pt.	22	20	18	16	14	12	1/8	3/16	1/4
14-14	3		905	1401	2040	2509	2573	2738		

The values listed are averages achieved under laboratory conditions and imply no warranty. Appropriate safety factors should be applied to these values for design purposes.

¹(Society of Automotive Engineers)

²(Fastener Inspection Products)

4HA1440_4HA1480_Rev. A (7/7/15)